



# The Shepherd's Voice

The Newsletter of Good Shepherd Lutheran Church: Jan/Feb 2012



SERVING THE  
CONGREGATION OF GOOD  
SHEPHERD  
LUTHERAN CHURCH, ELCA

2211 INVERNESS DRIVE  
LAWRENCE, KS  
66047-1962  
785-843-3014

GSLC@SUNFLOWER.COM  
WWW.GSLC-LAWRENCE.ORG

TED MOSHER  
GLSCPASTOR  
@SUNFLOWER.COM

LARA WEST,  
MUSIC DIRECTOR

GLORIA FULLER,  
ADMINISTRATIVE  
ASSISTANT

KATHY SMITH,  
PRESCHOOL DIRECTOR

**CONGREGATIONAL  
COUNCIL:**  
RICK LUCAS, PRESIDENT  
CHERYL STARK,  
VICE PRESIDENT;

DAVID THIEL,  
SECRETARY

SCOTT McCULLOUGH,  
TREASURER,

MERLIN HALVERSON,  
DENNIS RETHMAN,  
KRIS STERBENZ,  
KAREN HARRIS

PRAYER CHAIN:  
WEPRAY7  
@SUNFLOWER.COM



## The Good Shepherd website has a new look!

Check it out at the same address: [gslc-lawrence.org](http://gslc-lawrence.org) A website is often the first impression someone will get when they are searching for a church. With that in mind, the web team designed the site to be welcoming and friendly to those who might visit Good Shepherd while also providing calendar information, announcements and links to various resources for our congregation. At this time, the member login is not active; you can access the entire website without a username or password. Any cancellations or changes in services due to inclement weather will be posted on the front page.

## 50<sup>th</sup> Anniversary Mission Project

The 50<sup>th</sup> Anniversary Planning Committee feels it is important to commemorate our 50 years as a church family by giving a gift that will help bring the good news of God's love to others. It was decided our mission should be to raise funds for scholarships for seminarians in the ELCA. We actively invite your donations to this mission during the months of January, February, March, and April. We hope to be able to raise \$5000...this represents \$1000 for each of the five decades our congregation has been in existence. May 6<sup>th</sup> marks the 50<sup>th</sup> anniversary of the official organization of Good Shepherd Lutheran Church, so it seems fitting to present our gift to an appropriate synod representative at worship service that day. We ask you to prayerfully consider what you can contribute to help us meet this goal.

## Lawrence Give Back Card UPDATE!

A quick note of thanks to everyone who has already started using the Lawrence Give Back cards! In the brief time that GSLC has been a participant in this program, we have earned over \$45 for the 3rd quarter! This is great news because we didn't start promoting this program until after the 3rd quarter began so there is a lot of potential for this program! If you have your Lawrence Give Back cards, please be loyal and keep using them to help our community and GSLC! If you need a Lawrence Give Back Card, there are cards and brochures available in the narthex OR you can even pick a card up at any of the participating merchants in Lawrence. If you have any questions regarding how the program works please visit [www.lawrencegiveback.com](http://www.lawrencegiveback.com).



### INSIDE THIS ISSUE

|                                |     |
|--------------------------------|-----|
| Pastor's Page                  | 2   |
| Christian Education            | 3   |
| Music & Worship                | 4-5 |
| Green Pastures                 | 6   |
| Social Action<br>Fourth Friday | 7   |
| Dates to Remember              | 8   |

# Pastor's Page

Greetings in the name of our Lord and Savior Jesus Christ!

Once again, let me say Merry Christmas! It is not too late to say this but rather it is right in season. That may seem strange given that Christmas music started playing in stores and the on the radio by Thanksgiving if not before. And so it seems we have been celebrating Christmas for quite some time. As a kid my family would take down the Christmas tree and the decorations on the evening of Christmas Day or at the very latest, by the weekend immediately following Christmas Day.

The reality is that Christmas Eve/Christmas Day is the beginning of the Christmas season and so as this newsletter arrives you are encouraged to continue to spread Christmas cheer and offer one another Merry Christmas greetings.

But we do need to be quick about it as the time covered by this newsletter, January and February, touch on three seasons of our church year; Christmas, Epiphany, and Lent. In addition to that we also have the Baptism of our Lord, the Transfiguration of our Lord, and Ash Wednesday, not to mention our "Fat Tuesday" pancake dinner, even though this last item is not officially part of the liturgical church year. As you can see, we will cover a lot of ground over these next two months.

Most of us are more familiar with Christmas and Lent and so I offer a couple of comments on the season of Epiphany. The Gospel text for the day of the Epiphany of our Lord is from Matthew (2:1-12) and it is the story of the wise men, the magi, coming from afar to see the Christ child.

In the weeks of the Epiphany season, called the Sundays After Epiphany, we will encounter the Gospel accounts of the baptism of Jesus, Jesus calling the disciples, Jesus' encounter with the man with an unclean spirit, Jesus' many healings at Simon and Andrews house, and his cleansing of a leper, all culminating with the Transfiguration of our Lord.

The word epiphany means "to show or make manifest" and what all these Gospel accounts have in common are that they show or make manifest that Jesus is the Son of God. These Gospel accounts not only show and make manifest that Jesus is the Son of God but they also show how Jesus, the Christ child makes claims on their lives.

This is still what the season of Epiphany does today, it continues to show and make manifest that Jesus is the Son of God and then challenges us to see how this Christ child makes claims on our lives.

In that sense, it is quite fitting that our Annual Congregational Meeting which will take place on January 15<sup>th</sup>, falls in this season of Epiphany. As a faith community, together we are called to see how the Christ child makes claims on the life of our congregation. The leadership group will share with our congregation a Ministry Plan and a Spending Plan that we have all had an opportunity to discuss and pray over. These Ministry and Spending Plans will help show and make manifest to us and to our community the claims that the Christ child makes on our life together.

You are strongly encouraged to attend our Annual Congregational Meeting to help our faith community see how Christ is, and will be, manifest in our congregation over the next year and beyond.

The season of Epiphany is an important time for us individually and as a community to see how Christ is made manifest to us, to recognize and embrace the claims that Christ makes on our lives, and to then be intentional about how we can help make Christ's love manifest, how we can show and share Christ's love with one another, our faith community, and the world.

Grace and peace,

Pastor Ted

# Learning and Growing in Faith



## YOUTH QUAKE

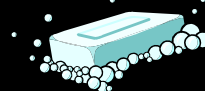
Several Good Shepherd middle schoolers and adults plan to attend a weekend of fun, worship and faith building at Youth Encounter's "Quake" in Topeka February 10-12. Incorporated in 1965, Youth Encounter is an evangelical and confessional Christian organization rooted in scripture and shaped by the Lutheran tradition.

This year's theme is **ROOTED**, based on Colossians 2:6-7: *So then, just as you received Christ Jesus as Lord, continue to live your lives in him, rooted and built up in him, strengthened in the faith as you were taught, and overflowing with thankfulness.* Please consider supporting these youth in



upcoming fund raising events and with your prayers.

## Rub-a-dub-dub, Put Soap in the Tub



Sunday School children are collecting bars of soap to send to children around the world through Lutheran World Relief. These bars of soap will help children who otherwise have none, to stay clean and healthy. You can join the effort by bringing bars of soap of any brand and placing in the tub in the narthex.

## Sunday School Christmas Program



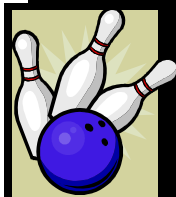
Sunday School children shared "Come to Bethlehem and See" with the congregation on December 18. Special thanks to Sonja Holmgren and Erin Halfen for directing the program.

Thank you to Cheryl Stark for organizing a fun Parent's Day Out event on Saturday, December 17. Parents had some free time while the kids rehearsed for the Sunday School program, enjoyed a pizza lunch, made crafts and ornaments and celebrated a birthday party for Jesus.



**No Sunday School:**  
**Jan 1, New Year's Day**  
**March 18, March 25**  
**Spring Break**

## Good Shepherd Goes Bowling



Enjoy some fun on the lanes with your Good Shepherd "family" on Sunday, February 19 at 2 p.m. at Royal Crest Lanes, 933 Iowa Street. Two games plus shoes for only \$7.

# Music & Worship Notes



Lara West, Music Director, [larylwest@gmail.com](mailto:larylwest@gmail.com) 913-367-6486



**Thank you** to everyone who helped to make our Advent and Christmas season a beautiful and meaningful experience. The worship committee would especially like to thank Matt Foerschler for making our new Advent

wreath and Rick and Linda Lucas for donating our Christmas tree. Thanks also to all the Advent and Christmas musicians and worship leaders, those who brought and served suppers for our midweek services in Advent, the Advent planning team, and the Altar Guild and all who helped with greening.

**Worship Volunteers:** You should have received a new schedule in early December. Be sure to check the schedule and record the dates you are assigned to serve. If you have a conflict on an assigned date, please trade dates with another volunteer. To be added to future volunteer schedules, indicate your interest on your commitment card and/or contact the church office.

## January & February Worship Dates

Sun., Jan. 1 Service of the Word  
(Lay-led worship, no communion)  
Sun., Jan. 8 Baptism of Our Lord  
Sun., Feb. 19 Transfiguration of Our Lord  
Habitat MusicFest  
Wed., Feb. 22 Ash Wednesday  
Sun., Feb. 26 First Sunday of Lent  
Wed., Feb. 29 Lenten soup suppers and midweek worship begin

## Epiphany (adapted from [www.elca.org](http://www.elca.org))

The church calendar recognizes the season of Epiphany from January 6 until the last Sunday before Ash Wednesday, which is the Transfiguration of our Lord (Feb. 19 this year). Themes for the Epiphany season include the revelation of Christ to all nations, Christ as the light of the world, the public ministry of Christ, and growth in a Christian's baptized identity. Families might wish to pray for people all over the

world during this season. This is also a good time to think about how we can use our own gifts to reveal the light of Christ to the world.

On the day of Epiphany, January 6 (the 12<sup>th</sup> day of Christmas), the church celebrates the revelation of Christ to all nations as represented by the magi who come to worship Jesus. Since the star is a symbol of the festival of Epiphany, families might like to celebrate at home by making star decorations or cookies. We also encourage you to bless your home on this day. See **below** for a suggested order for house blessing. This blessing will also be found in the bulletin on January 1.

On the Baptism of Our Lord, January 8, you may take home a candle to light in remembrance of your own baptism. You might like to light this candle on your baptismal birthday. If you don't know the date of your baptismal birthday, you can pick another date or light it on January 8.



## Lent 2012

The Lenten season begins on Ash Wednesday (Feb. 22 this year) and lasts for 40 days (not counting Sundays). As part of our 50<sup>th</sup> anniversary celebration, we will be publishing a Lenten devotional booklet written by members, friends, and pastors of Good Shepherd. Be sure to pick up your copy at the church in the weeks leading up to Lent, or ask the office to mail you a copy.

**“Remember that you are dust.”** Our Ash Wednesday worship will take place on February 22 at 7:00 pm. This service marks the beginning of Lent, with imposition of ashes and Holy Communion.

## Lenten Midweek Schedule

Please join us on Wednesdays, February 29-March 28:

|         |                                   |
|---------|-----------------------------------|
| 6:00 pm | Soup supper, Fellowship Hall      |
| 7:00 pm | Midweek Lenten worship, Sanctuary |

**GSLC Choir:** Rehearsals resume Thursday Jan. 12, 7:00-8:15 pm (no rehearsal on 12/29 or 1/5). New members are always welcome! Contact me for more information or to be added to the email list.

**Instrumentalists/Vocalists/Cantors:** Solos and ensembles are welcome to provide prelude or offering music, and accompany anthems, hymns or liturgy. Contact me to volunteer.



### Blessing for a Home at Epiphany



Matthew writes that when the magi saw the shining star stop overhead, they were filled with joy. "On entering the house, they saw the child with Mary his mother" (Matt. 2:10-11). In the home, Christ is met in family and friends, in visitors and

strangers. In the home, faith is shared, nurtured, and put into action. In the home, Christ is welcome.

Twelfth Night (January 5) or another day during the twelve days of Christmas or the time after Epiphany offers an occasion for gathering with friends and family members for a blessing of the home, using the following as a model. A visual blessing may be inscribed with white chalk above the main door; for example, 20 + CMB + 12. The numbers change with each new year. The three letters stand for either the ancient Latin blessing *Christe mansionem benedicat*, which means, "Christ, bless this house," or the legendary names of the magi (Caspar, Melchior, and Balthasar).

**Greeting:** May peace be to this house and to all who enter here. By wisdom a house is built and through understanding it is established; through knowledge its rooms are filled with rare and beautiful treasures. (See Proverbs 24:3-4.)

**Reading:** As we prepare to ask God's blessing on this household, let us listen to the words of scripture.

In the beginning was the Word, and the Word was with God, and the Word was God. He was in the beginning with God. All things came into being through him, and without him not one thing came into being. What has come into being in him was life, and the life was the light of all people. The Word became flesh and lived among us, and we have seen his glory, the glory as of a father's only son, full of grace and truth. From his fullness we have all received, grace upon grace. (See John 1:1-4, 14, 16.)

**Inscription:** This inscription may be made with chalk above the entrance:

20 + C M B + 12

The magi of old, known as

C Caspar,  
M Melchior, and  
B Balthasar



followed the star of God's Son who came to dwell among us

20 two thousand

12 and twelve years ago.

+ Christ, bless this house,

+ and remain with us throughout the new year.

**Prayer of Blessing:** O God, you revealed your Son to all people by the shining light of a star. We pray that you bless this home and all who live here with your gracious presence. May your love be our inspiration, your wisdom our guide, your truth our light and your peace our benediction; through Christ our Lord. **Amen.**

Then everyone may walk from room to room, blessing the house with incense or by sprinkling with water, perhaps using a branch from the Christmas tree.



From *Sundays & Seasons*, copyright © 2009 Augsburg Fortress.

## Good Shepherd Volunteers - JANUARY 2012

| Position                   | 1-Jan            | 8-Jan            | 15-Jan           | 22-Jan           | 29-Jan             |
|----------------------------|------------------|------------------|------------------|------------------|--------------------|
| <b>Worship Coordinator</b> | David Thiel      | Becky Foerschler | Walter Willmert  | Susie Brooks     | Ar Windibiziri     |
| <b>Assistant Minister</b>  | Walter Willmert  | Mark Algren      | Mark Brooks      | Kathy Algren     | Merlin Halverson   |
| <b>Reader</b>              | Ann Jesse        | Matt Foerschler  | Faith Nilhas     | Ann Nichols      | Sean Jesse         |
| <b>Communion</b>           | N/A              | Childers         | Halverson        | Nichols/Harris   | Hillmer            |
| <b>Ushers</b>              | Dresbach         | Harris/Thiel     | Mortensen        | Foerschler       | Sanden             |
| <b>Greeter</b>             | Brooks           | Sherry Brun      | Monica Butschle  | Collier Case     | Virgie Christy     |
| <b>Acolyte</b>             | Taylor Mosher    | Ben Soukup       | Paul Jesse       | Paige Soukup     | Saraya Windibiziri |
| <b>Clean Upstairs</b>      | McCullough       | Pope             | Neilsen          | Brooks           | Foerschler         |
| <b>Clean Downstairs</b>    | Volunteer Needed | Volunteer Needed | Volunteer Needed | Volunteer Needed | Volunteer Needed   |
| <b>Nursery Help</b>        | Laura Neilsen    | Ian Pepin        | Aimee Neilsen    | Ben Soukup       | Laura Neilsen      |
| <b>Shoveling</b>           | Soukup           | Case             | Sanden/Dresbach  | Foerschler       | Neilsen            |
| <b>Potluck</b>             | N/A              | N/A              | N/A              | N/A              | N/A                |
| <b>Prayer Partner</b>      | N/A              | Becky Foerschler | Kathy Algren     | Joanne Hickey    | Becky Foerschler   |

## Good Shepherd Volunteers - FEBRUARY 2012

| Position                   | 5-Feb            | 12-Feb           | 19-Feb           | 22-Feb Ash Wed   | 26-Feb           |
|----------------------------|------------------|------------------|------------------|------------------|------------------|
| <b>Worship Coordinator</b> | David Thiel      | Becky Foerschler | Walter Willmert  | Susie Brooks     | Ar Windibiziri   |
| <b>Assistant Minister</b>  | Joanne Hickey    | David Rasmussen  | Kris Sterbenz    | Becky Foerschler | Walter Willmert  |
| <b>Reader</b>              | Mark Algren      | Monica Butschle  | Merlin Halverson | Sherry Brun      | Steve Dresbach   |
| <b>Communion</b>           | Willmert         | Sanden           | Neilsen          | Pope             | Rasmussen        |
| <b>Ushers</b>              | Pope             | Tucker/Butschle  | Dresbach         | Thiel/Harris     | Neilsen          |
| <b>Greeter</b>             | Dresbach         | Halverson        | Harris/Schaible  | Lignell          | Mortensen        |
| <b>Acolyte</b>             | Tristan Rethman  | Haven Rethman    | Sean Jesse       | Kambree Judy     | Taylor Mosher    |
| <b>Clean Upstairs</b>      | Sanden           | Thiel            | Childers         | N/A              | McCullough       |
| <b>Clean Downstairs</b>    | Volunteer Needed | Volunteer Needed | Volunteer Needed | N/A              | Volunteer Needed |
| <b>Nursery Help</b>        | Ian Pepin        | Aimee Neilsen    | Ben Soukup       | Laura Neilsen    | Ian Pepin        |
| <b>Shoveling</b>           | Kyle Juracek     | Case             | Sanden/Dresbach  | N/A              | Foerschler       |
| <b>Potluck</b>             | Harris/Meyer     | N/A              | N/A              | N/A              | N/A              |
| <b>Prayer Partner</b>      | Barbara Schaible | Becky Foerschler | Kathy Algren     | N/A              | Joanne Hickey    |

# Social Action Ministry

Our group of twelve faithful walkers raised a total of \$2968 for the CROP Walk this year, a record amount for Good Shepherd! Many thanks to all the generous sponsors for your contributions and prayers of support. These funds help to relieve hunger, thirst, and disease around the world, with 25% staying right here in our own community.



The week of January 1-8, Trinity Lutheran will again host Family Promise and support from us at Good Shepherd is much needed. There will be volunteer opportunities for overnight hosts, evening hosts, and help with meals. Lawrence Family

Promise serves young families with children who find themselves temporarily homeless due to a crisis in their lives, such as job loss.

Our next service day at LINK is scheduled for Saturday, January 28. Lawrence Interdenominational Nutrition Kitchen serves approximately 140 meals four days a week to our fellow Lawrencians who are hungry or just lonely. Many volunteers are needed for setup, serving, and cleanup, as well as donations of food items. Signup sheets will be posted in the narthex beginning January 8.

Social Action Ministry meets on the first Thursday of each month at 6:30. Anyone is welcome to attend; we are always interested in hearing your views and suggestions. Contact Susie Brooks at [sbrksks@aol.com](mailto:sbrksks@aol.com) for more information.

## Fourth Friday Fellowship

Our annual International Christmas potluck was held at the church on December 2. Everyone was invited to bring a special dish from their own ethnic heritage, often something special made only during the holidays, or to bring something from another heritage that they would like to represent. Celebrating with our Good Shepherd friends was a delightful way to begin the holiday season.

On January 27, Gary and Maria Sanden have invited us to their home in Baldwin City for a movie night. We will view a movie selected by Ken Ratzlaff, who earned the privilege by winning the "20 Questions" game in September. We will gather at 6:30, and start the movie around 7:00. Everyone is invited to bring a snack, dessert, or beverage to share.

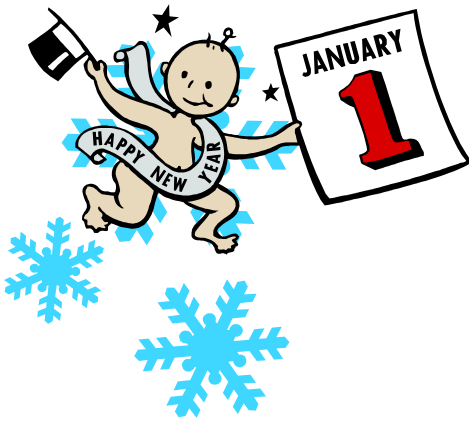


We have a special event planned for February 24, which will be hosted by David and Kathie Rasmussen: a wine tasting! Start time will be 6:30, and guests are asked to bring hors d'oeuvres to enjoy while we sample the various wines offered. We should also plan to contribute \$20 per person to cover the cost of the wines.

All adult members, visitors, and friends of Good Shepherd are invited to join this fun group for any or all of our events. Contact Susie Brooks at [sbrksks@aol.com](mailto:sbrksks@aol.com) if you have questions.



Good Shepherd Lutheran Church  
2211 Inverness Dr.  
Lawrence, KS 66047



## *Dates to Remember*

|               |  |                    |   |
|---------------|--|--------------------|---|
| Sun., Jan. 1  | Service of the Word<br>(Lay-led worship, no communion) |                    | <b><i>Please join us on<br/>Wednesdays, February 29-March 28:</i></b> |
| Sun., Jan. 8  | Baptism of Our Lord<br>Sunday School Resumes           | 6:00 pm<br>7:00 pm | Soup supper, Fellowship Hall<br>Midweek Lenten worship,<br>Sanctuary  |
| Sun., Jan. 15 | Annual Congregational Meeting                          |                    |   |
| Sun., Feb. 19 | Transfiguration of Our Lord<br>Habitat MusicFest       |                    |   |
| Wed., Feb. 22 | Ash Wednesday  |                    |   |
| Sun., Feb. 26 | First Sunday of Lent                                   |                    |   |

For more dates and scheduling changes, please see the calendar at [www.gslc-lawrence.org](http://www.gslc-lawrence.org).

PLEASE SEND NEWSLETTER SUBMISSIONS TO THE CHURCH OFFICE BY THE 15TH OF THE PRECEDING MONTH.  
BULLETIN ANNOUNCEMENTS ARE DUE WEDNESDAY.